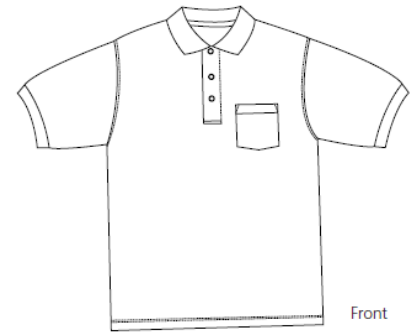


# Silk Touch Pique Knit Sport Shirt with Pocket

PORT | AUTHORITY®



## K500P

- \* 5-ounce \* 65/35 poly/cotton pique \* \* Flat knit collar and cuffs
- \* Double-needle armholes and bottom hem \* Side vents
- \* Metal buttons with dyed-to-match rims

### Finished Measurements in Inches

Size	XS	S	M	L	XL	2XL	3XL	4XL	5XL	6XL
Chest	19	20.5	21.5	23.5	25.5	27	28.5	30	31.5	33
Length	25.5	26.5	30	31	32	33	33.5	34	34.5	35.5
Sleeve	9	9.5	11	11.5	12	12.5	13	13.5	14	14.5
Collar	15.5	16	16.5	17	17.5	18	18.5	19	19.5	20
Pocket	4.5x5	4.5x5	4.5x5	4.5x5	4.5x5.5	4.5x5.5	4.5x5.5	4.5x5.5	5x5.5	5x5.5

Chest width measured 1" below arm hole. Body length measured from back neck seam to hem.  
Sleeve length measured from shoulder seam to hem. Collar measured by circumference. Pocket WxH.

#### Care Instructions:

Machine wash cold with like colors.  
Do not bleach.  
Tumble dry low.  
Warm iron if necessary.